

# Vision & Excellence: The Strategic Direction of London Higher

*Dr Michael Reynier (Deputy Director)*

- London Higher
- Vision & Excellence
- London 2012
- Other Projects
- Ways Forward →



# A Membership Association

*The biggest and most varied in England...*

Birkbeck University of London\*  
Brunel University  
Central School of Speech & Drama\*  
City University  
Conservatoire for Dance and Drama  
Courtauld Institute of Art\*  
Goldsmiths College University of London\*  
Guildhall School of Music & Drama  
Heythrop College \*  
Imperial College London\*  
Institute of Cancer Research\*  
Institute of Education\*  
King's College London\*  
Kingston University  
London Business School\*

London Metropolitan University  
London School of Hygiene & Tropical Medicine\*  
London South Bank University  
Middlesex University  
Queen Mary, University of London\*  
Ravensbourne College of Design and Communication  
Roehampton University  
Rose Bruford College  
Royal Academy of Music\*  
Royal College of Art  
Royal College of Music  
Royal College of Nursing Institute  
Royal Holloway University of London\*  
School of Oriental and African Studies, University of London \*

School of Pharmacy\*  
St George's Hospital Medical School\*  
St Mary's College  
Thames Valley University  
The Open University in London  
The Royal Veterinary College\*  
Trinity College of Music  
University College London\*  
University of East London  
University of Greenwich  
University of London\*  
University of the Arts London  
University of Westminster  
Wimbledon School of Art

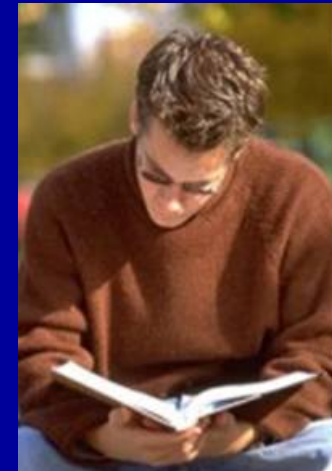
\* *Colleges of the University of London*

# London Higher: Our Mission

To establish London as the knowledge capital of the world

## Working with our members to...

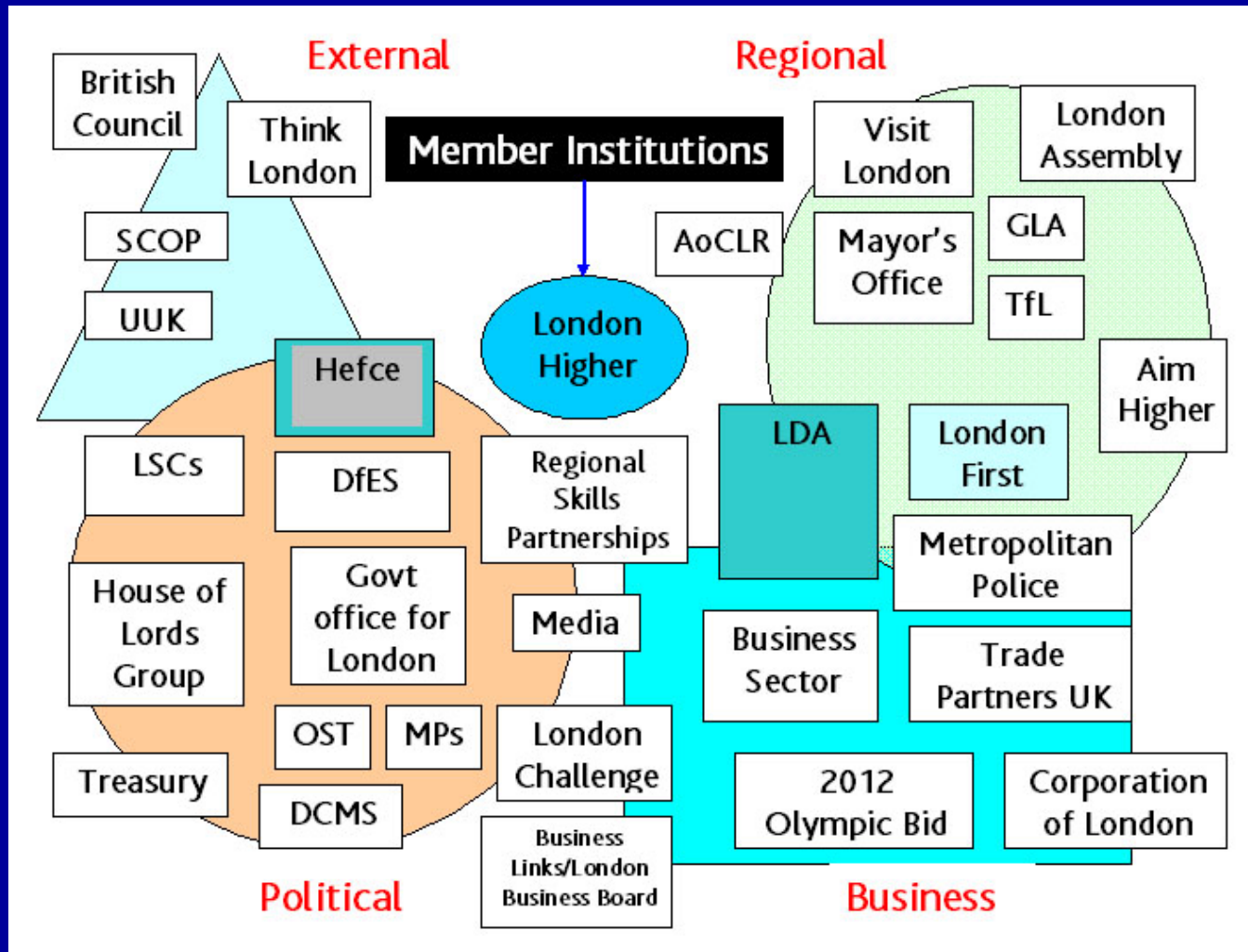
- Explore the unique aspects of HE in the capital
- Collate data and canvass opinions
- Identify potential threats, risks & opportunities



## Working with stakeholders to...

- Promote & communicate information about HE in London
- Represent the collective interests of the HE group (where mandated)
- Facilitate links between HE and other agencies

# Stakeholders





# Four Key Themes

To develop – not merely ‘sustain’

- To establish London as the undisputed ‘*Knowledge Capital*’ of the world
- To *maintain and develop* essential HE facilities
- To continue to *recruit, retain and develop* world class staff, at all levels
- To enhance strategies and continue to support, contribute to & develop *London and Londoners* →



# 10 Specific Goals

Each may comprise separate elements...

## Knowledge Capital

Promotional Campaign  
Lobbying

## Staff

Location Premia  
Keyworker Status  
London  
Fellowship/Scholarship

## Facilities

Incubators, parks,  
follow-on space  
Academic Village(s)

## London & Londoners

Working with FE and Schools  
Promoting graduate skills  
Utilize the skills of migrant workers

# The Olympic & Paralympic Games

“...my thanks to the universities ...in London for their sterling support of the London bid” \*

- June 03: Set up Olympic sub-committee
- May-Oct 04: Negotiated c. 10,000 rooms
- Aug 04: hosted ‘Promote the bid’ event
- Sept 04: Organised student photo-op at Lords
- Dec 04: set up volunteering sub-group
- Feb 05: ‘Dressed’ selected HEI locations →



\* Lord Coe, Chairman London 2012

# July 6<sup>th</sup>: The Games Return to London

*There are opportunities for HE*

## Opportunities...

- Raise international profile
- Income streams
- Infrastructure
- Progress in PIs (WP, Community, Business →



# July 6<sup>th</sup>: The Games Return to London

...and there are challenges

## Challenges...

- Flow of information
- Duplication of effort
- Non-competitiveness
- Delayed returns on investment
- Sustainability →



# Scoping Study

....To develop a single entry point for HE, through which all HEIs can be informed

- Map the existing HE contribution to the Games
- Conduct a short review into the HE activity in previous Games
- Identify the range of potential opportunities for HE
- Assess the risks
- Assess the impact of activities on local communities
- Propose models for communication



# Other Projects

*A number of initiatives, two of which are:*

## Research Excellence...

- To demonstrate the full extent of research excellence
- 8 strands (incl. infrastructure, spinouts, links)
- Identify potential threats and risks
- Promote & communicate outcomes

## Worlds Cities & HE...

- To understand where London stands compared to other world cities
- Stats., geospatial context, support, infrastructure
- Identify effective practices and learn from them →



# Contact

*Dr Michael Reynier, Projects & Policy Manager*

- Email: [michael.reynier@londonhigher.ac.uk](mailto:michael.reynier@londonhigher.ac.uk)
- Website: <http://www.londonhigher.ac.uk>
- Telephone: 0207 644 4844
- Address: Senate House  
Malet Street  
London  
WC1E 7HU

